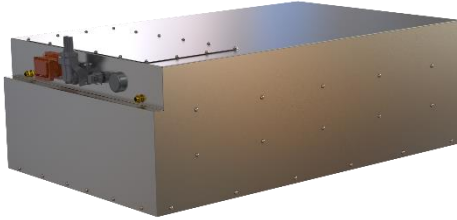


EN057BW100K666V153AHNMC

100 kWh lithium-ion battery

Product information:



High Voltage lithium-ion battery is based on highly efficient cells that use NMC technology resulting in high power and durability. Low mass and high energy density enable use of the battery to power buses and trucks. The battery is equipped with Battery Management System, which allows to use the battery maintenance-free and to check its parameters with bus CAN or web application.

Specifications:

	Parameters		Unit	Value
Basic parameters	Rated voltage		V	666
	Maximum voltage		V	756
	Minimum voltage		V	520
	Rated capacity		Ah	153
	Energy		kWh	100
	Dis - / - charge current		A	150
	Rated power		kW	100
	Maximum power		kW	170
	Maximum charge current		A	255 (30sec)
	Maximum discharge current		A	255 (30sec)
	Number of cycles			≥ 4000
Working conditions	Working temperatures	charging	°C	0 – 45
		discharging		-20 ~ +55
	Environmental resistance			IP65
Humidity		%	90	
Mechanical parameters	Length		mm	1336
	Width		mm	810
	Height		mm	430
	Mass		kg	560
	Power connector		Amphenol HVC2P80MV118	

* the manufacturer reserves the right to make changes to the parameters and appearance of the product